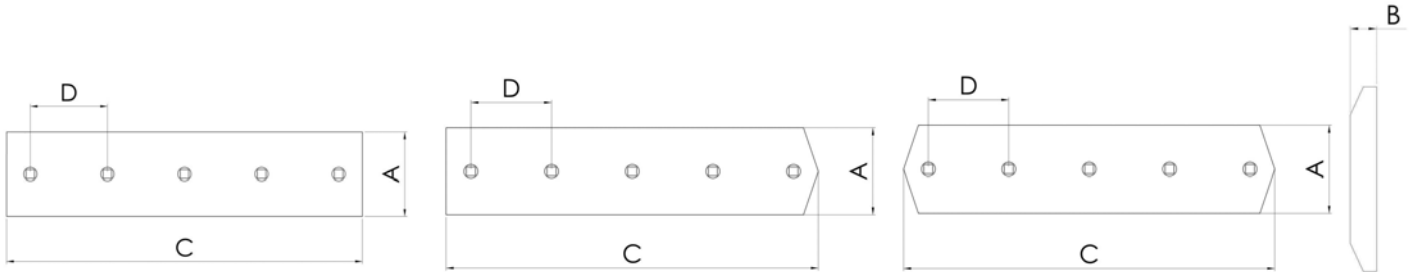


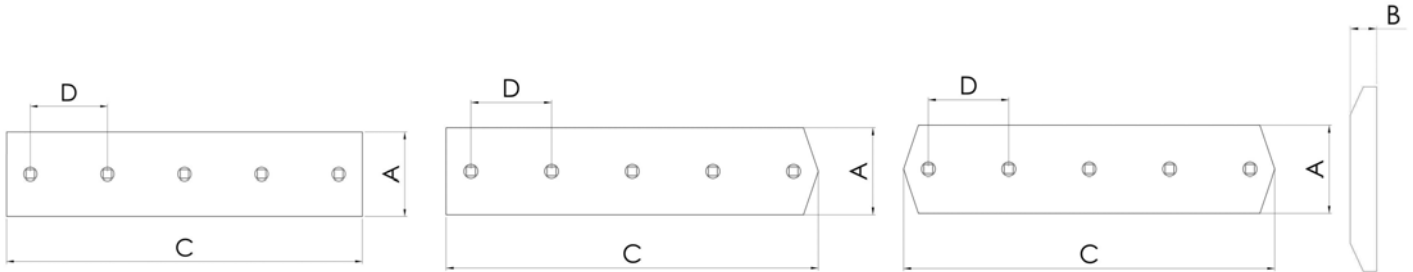
- Taglienti per dozer
- Cutting edges for bulldozers
- Dozer-Messer
- Lame pour dozer
- Режущие кромки для бульдозеров



N. ORIGINALE ORIGINAL P/N ORIGINAL-NR. N. ORIGINAL ОРИГИНАЛЬНЫЙ НОМЕР	PESO (KG) WEIGHT GEWICHT POIDS ВЕС	DIMENSIONI - DIMENSIONS ABMESSUNGEN - DIMENSIONS - РАЗМЕРЫ					N. FORI HOLES BOHR. TROUS КОЛ-ВО ОТВЕРСТИЙ	MODELLO MODEL MODELL MODELE МОДЕЛЬ МАШИНЫ
		A (mm)	B (mm)	C (mm)	D (")	Ø Bolt (")		
<b>70663503</b>	98	305	32	1368	152,4	1 1/4	9	
<b>70668615</b>	50,5	203	22	1560	152,4	7/8	10	
<b>70669675</b>	37,5	254	25	756	152,4	1	5	
<b>70669676</b> *	90	254	25	1974	152,4	1	13	
<b>70670247</b>	41,7	254	25	925	152,4	1	6	
<b>70670252</b>	72,2	254	25	1519	152,4	1	10	
<b>70675496</b>	74,5	254	25	1657	152,4	1	11	
<b>70693722</b> *	48	305	32	818	152,4	1 1/4	5	
<b>70698861</b>	117	305	32	2008	152,4	1 1/4	11	
<b>73064170</b>	83,7	330	25	1392	152,4	3/4	9	
<b>73064171</b>	97,5	330	25	1640	152,4	3/4	11	
<b>73068280</b>	132	406	25	1773	175,3	1	9	
<b>73070015</b>	56	254	25	1244	152,4	3/4	7	
<b>73105310</b>	54,5	330	25	907	152,4	1	5	
<b>73109991</b>	170,5	330	41	1670	152,4	1 1/4	11	
<b>73113271</b> *	64,5	330	35	813	152,4	1 1/4	5	
<b>73113273</b>	106	330	35	1210	152,4	1 1/4	8	
<b>73113274</b>	115	330	41	1210	152,4	1 1/4	8	
<b>73117698</b>	29,1	203	25	758	152,4	3/4	5	
<b>73117701</b>	35	203	25	912	152,4	3/4	6	
<b>73117719</b>	30	203	19	1063	152,4	3/4	7	
<b>73121900</b>								
<b>73121902</b>								
<b>73122334</b>								
<b>73122335</b>								
<b>76001392</b>								
<b>76005429</b>								
<b>76005845</b>	27,9	203	19	1024	152,4	3/4	7	

Tutti i numeri, simboli, e denominazioni originali sono usati soltanto per riferimento, e non si deve in alcun modo intendere che i pezzi elencati siano originali.  
All manufacturers' name, numbers, symbols and descriptions are used for reference purpose only, and it is not implied that any part listed is the product of these manufacturers.

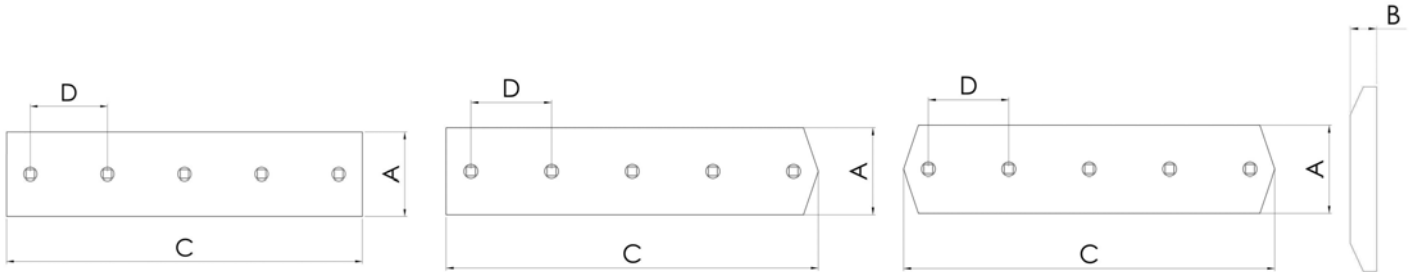
- Taglienti per dozer
- Cutting edges for bulldozers
- Dozer-Messer
- Lame pour dozer
- Режущие кромки для бульдозеров



N. ORIGINALE ORIGINAL P/N ORIGINAL-NR. N. ORIGINAL ОРИГИНАЛЬНЫЙ НОМЕР	PESO (KG) WEIGHT GEWICHT POIDS ВЕС	DIMENSIONI - DIMENSIONS ABMESSUNGEN - DIMENSIONS - РАЗМЕРЫ					N. FORI HOLES BOHR. TROUS КОЛ-ВО ОТВЕРСТИЙ	MODELLO MODEL MODELL MODELE МОДЕЛЬ МАШИНЫ
		A (mm)	B (mm)	C (mm)	D (")	Ø Bolt (")		
<b>76007622</b>								
<b>76009909</b>								
<b>76009910</b>								
<b>76011642</b>								
<b>76011643</b>								
<b>76011739</b>								
<b>76011740</b>								
<b>76012763</b>								
<b>76012845</b>								
<b>76029398</b>	45,5	254	25	968	152,4	7/8	6	
<b>79026239</b>								
<b>79030642</b>	44	254	25	910	152,4	7/8	6	
<b>79030643</b>	38,3	254	25	816	152,4	7/8	5	
<b>79030644</b>	45	254	25	1005	152,4	7/8	7	
<b>79033807</b>								
<b>79033809</b>								
<b>79042492</b>								
<b>79042493</b>								
<b>79064570</b>								
<b>79064571</b>								
<b>79077486</b>	31,5	203	19	1072	152,4	3/4	7	
<b>79081670</b>	21,6	203	19	736	152,4	3/4	5	
<b>79084655</b>	42,5	203	19	1446	152,4	3/4	8	
<b>79084656</b>	13	203	19	445	152,4	3/4	3	
<b>79087094</b>	37,4	203	19	1366	152,4	3/4	9	
<b>79091502</b>	22,7	203	19	772	152,4	3/4	5	
<b>79091503</b>	21,8	203	19	744	152,4	3/4	5	
<b>79101015</b>	31,9	203	19	1176	152,4	3/4	8	

Tutti i numeri, simboli, e denominazioni originali sono usati soltanto per riferimento, e non si deve in alcun modo intendere che i pezzi elencati siano originali.  
All manufacturers' name, numbers, symbols and descriptions are used for reference purpose only, and it is not implied that any part listed is the product of these manufacturers.

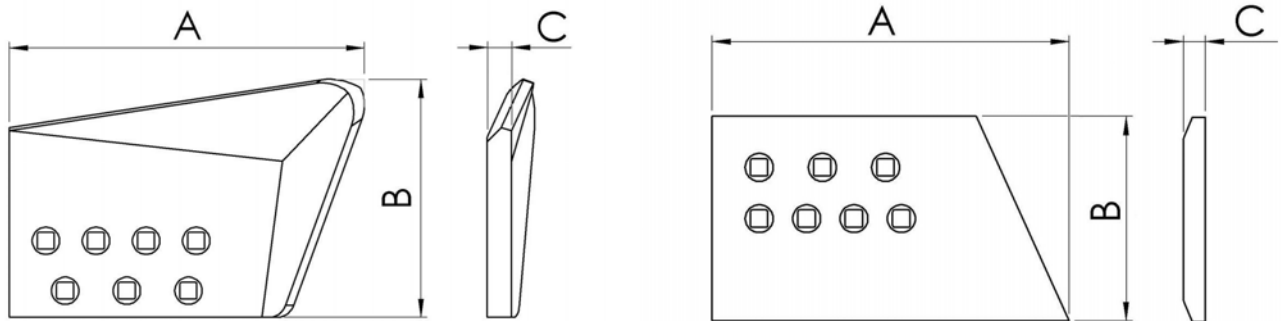
- Taglienti per dozer
- Cutting edges for bulldozers
- Dozer-Messer
- Lame pour dozer
- Режущие кромки для бульдозеров



N. ORIGINALE ORIGINAL P/N ORIGINAL-NR. N. ORIGINAL ОРИГИНАЛЬНЫЙ НОМЕР	PESO (KG) WEIGHT GEWICHT POIDS ВЕС	DIMENSIONI - DIMENSIONS ABMESSUNGEN - DIMENSIONS - РАЗМЕРЫ					N. FORI HOLES BOHR. TROUS КОЛ-ВО ОТВЕРСТИЙ	MODELLO MODEL MODELL MODELE МОДЕЛЬ МАШИНЫ
		A (mm)	B (mm)	C (mm)	D (")	Ø Bolt (")		
<b>79108021</b>	20,8	203	19	885	152,4	3/4	6	
<b>8268514</b>								
<b>8281238</b>								
<b>8282112</b>								
<b>8282235</b>	77	203	19	2780	152,4	3/4	18	
<b>8282606</b>	60,5	203	19	2200	152,4	3/4	15	
<b>8283232</b>	34	150	16	1905	152,4	5/8	5	
<b>8285291</b>								
<b>8285416</b>	87	203	19	3070	152,4	3/4	21	
<b>8285417</b>	68,3	203	19	2409	115	3/4	17	
<b>8287739</b>	45	254	25	910	152,4	7/8	6	
<b>8287744</b>								
<b>8287748</b>	75,5	254	25	1672	152,4	7/8	11	
<b>8287749</b>	75,5	254	25	1672	152,4	7/8	11	
<b>8294269</b>	31	203	19	1063	152,4	3/4	7	
<b>8294271</b>	25,8	203	19	912	152,4	3/4	6	
<b>8294272</b>	25	203	19	912	152,4	3/4	6	
<b>8294668</b>	21,5	203	19	758	152,4	3/4	5	
<b>8294961</b>	45,1	254	25	1005	152,4	7/8	7	
<b>8294963</b>								
<b>8295487</b>								
<b>8295488</b>								
<b>8297930</b>								
<b>8297932</b>								
<b>8298397</b>	13,5	150	16	807	152,4	3/4	4	
<b>8298398</b>	9	150	16	534	152,4	3/4	4	
<b>8298624</b>								
<b>8299623</b>								

Tutti i numeri, simboli, e denominazioni originali sono usati soltanto per riferimento, e non si deve in alcun modo intendere che i pezzi elencati siano originali.  
All manufacturers' name, numbers, symbols and descriptions are used for reference purpose only, and it is not implied that any part listed is the product of these manufacturers.

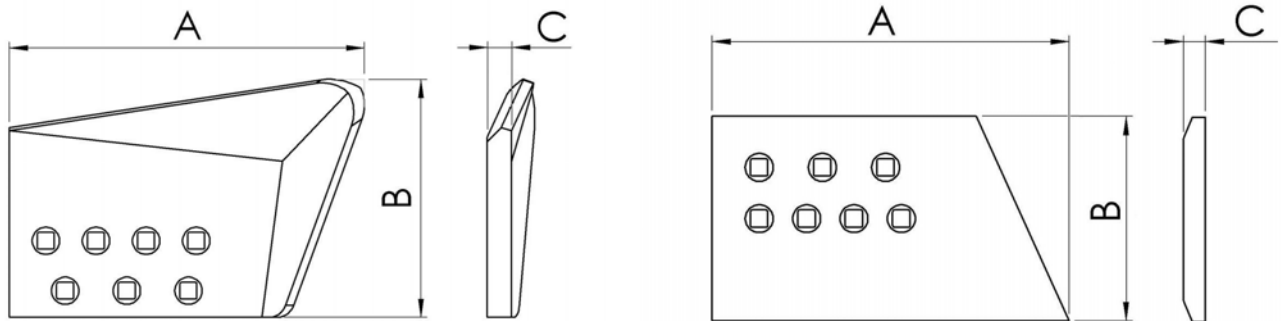
- Angolari per dozer
- End bits for bulldozers
- Dozer-Ecken
- Coins pour dozer
- Угловые ножи для бульдозеров



N. ORIGINALE (D-S) ORIGINAL P/N (R-L) ORIGINAL-NR. N. ORIGINAL ОРИГИНАЛЬНЫЙ НОМЕР	PESO (KG) WEIGHT GEWICHT POIDS ВЕС	DIMENSIONI - DIMENSIONS ABMESSUNGEN - DIMENSIONS - РАЗМЕРЫ				N. FORI HOLES BOHR. TROUS КОЛ-ВО ОТВЕРСТИЙ	MODELLO MODEL MODELL MODELE МОДЕЛЬ МАШИНЫ
		A (mm)	B (mm)	C (mm)	Ø Bolt (")		
<b>673081/82</b>	36,5	575	340	35	1	7	
<b>70691684</b>	22,5	457	210	31	3/4	6	
<b>70617310/09</b>	25,5	527	203	32	3/4	6	
<b>70673081/82</b>	36,5	574	340	35	1	7	
<b>70691722/21</b>	39	545	275	38	1	5	
<b>70694290/89</b>	20,5	527	203	25	3/4	6	
<b>70694316/15</b>	33	560	250	32	3/4	6	
<b>73113275/76</b>	93,5	710	368	57	1 1/4	7	
<b>73113277/78</b>	112	787	375	57	1 1/4	8	
<b>73113879/80</b>	86,1	710	368	51	1 1/4	7	
<b>73115301/02</b>	72	710	357	45	1 1/4	7	
<b>73115303/04</b>	82,7	787	364	45	1 1/4	8	
<b>73117699/700</b>	16,5	462	228	25	3/4	6	
<b>73117707/08</b>	10	398	165	20	5/8	7	
<b>73117713/14</b>	17,5	420	232	25	3/4	6	
<b>73117715/16</b>	15,5	404	235	25	3/4	6	
<b>73139711/12</b>	30	543	278	30	1	7	
<b>76008258/59</b>	18,5	478	240	25	3/4	6	
<b>76015473/74</b>	18	478	240	25	3/4	6	
<b>76015476/77</b>	14,7	356	240	25	3/4	6	
<b>76015483/84</b>	31	545	300	30	7/8	7	
<b>76015485/86</b>	29,8	477	297	30	7/8	7	

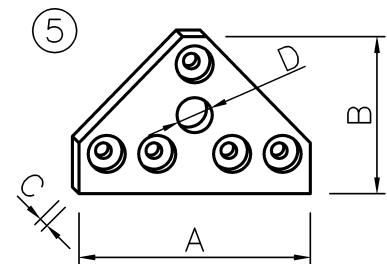
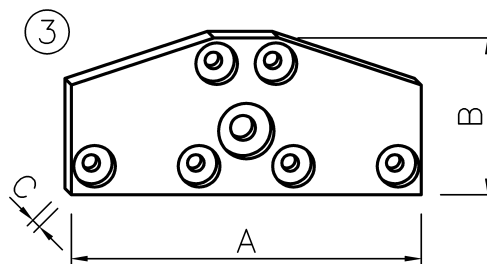
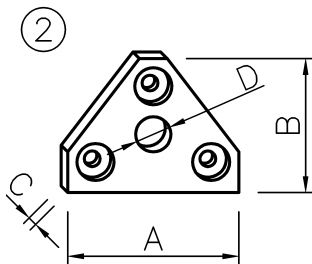
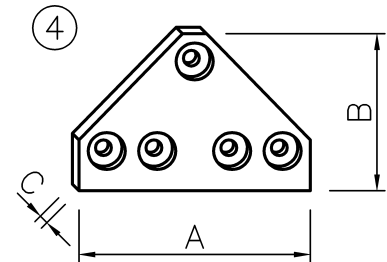
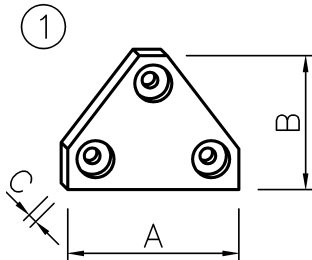
Tutti i numeri, simboli, e denominazioni originali sono usati soltanto per riferimento, e non si deve in alcun modo intendere che i pezzi elencati siano originali.  
All manufacturers' name, numbers, symbols and descriptions are used for reference purpose only, and it is not implied that any part listed is the product of these manufacturers.

- Angolari per dozer
- End bits for bulldozers
- Dozer-Ecken
- Coins pour dozer
- Угловые ножи для бульдозеров



N. ORIGINALE (D-S) ORIGINAL P/N (R-L) ORIGINAL-NR. N. ORIGINAL ОРИГИНАЛЬНЫЙ НОМЕР	PESO (KG) WEIGHT GEWICHT POIDS ВЕС	DIMENSIONI - DIMENSIONS ABMESSUNGEN - DIMENSIONS - РАЗМЕРЫ				N. FORI HOLES BOHR. TROUS КОЛ-ВО ОТВЕРСТИЙ	MODELLO MODEL MODELL MODELE МОДЕЛЬ МАШИНЫ
		A (mm)	B (mm)	C (mm)	Ø Bolt (")		
<b>76015487/88</b>	19,2	472	244	25	0,75	7	
<b>76015489/90</b>	16,8	397	243	25	3/4	7	
<b>76040464/65</b>	15,6	444	235	25	3/4	6	
<b>79089945/46</b>	18,5	482	240	25	0,75	6	
<b>79094511/12</b>	18,5	510	240	25	0,75	6	
<b>79103361/62</b>	19	420	208	25	3/4	6	
<b>76032972/71</b>	19,8	422	240	29	3/4	6	
<b>79104464/83</b>	19,6	422	240	29	3/4	6	
<b>8273009/10</b>	13,5	340	195	29	5/8	5	
<b>8280975/76</b>	24	475	245	32	3/4	7	
<b>8282113/14</b>	32	450	240	40	3/4	7	
<b>8282607/08</b>	16,5	435	230	25	3/4	7	
<b>8287740/41</b>	38,5	533	284	40	7/8	7	
<b>8292092/93</b>	19	397	243	29	3/4	7	
<b>8292100/01</b>	19,5	430	244	25	3/4	7	
<b>8292143/44</b>	21	472	244	29	3/4	7	
<b>8294273/74</b>	19,6	422	240	29	0,75	6	
<b>8294446/47</b>	27	575	340	35	1	7	
<b>8296486/87</b>	20	457	233	29	3/4	6	
<b>8297645/46</b>	17	356	280	29	3/4	6	
<b>8299624/25</b>	11	400	200	20	3/4	6	

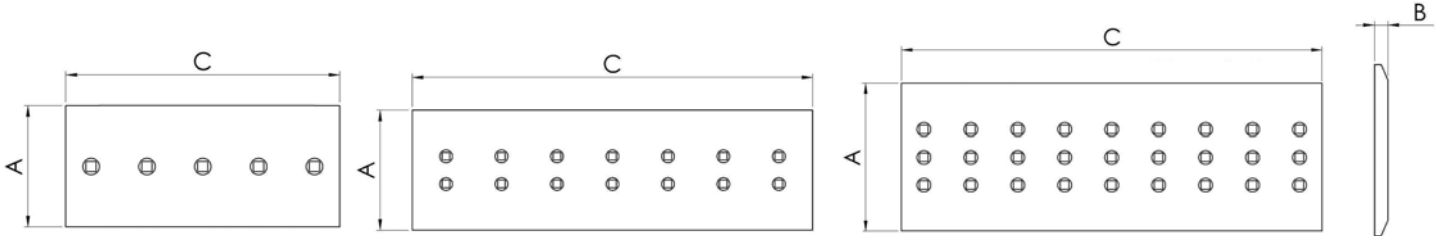
- Piastre tendicingoli
- Track-stretcher plates
- Platte für Spannstiftvorrichtung
- Plaque pour fixation du tendeur de chenille
- пластины натяжного механизма



N. ORIGINALE ORIGINAL P/N ORIGINAL-NR. N. ORIGINAL ОРИГИНАЛЬНЫЙ НОМЕР	PARTIC. ITEM TYP DETAIL ТИП	PESO (KG) WEIGHT GEWICHT POIDS ВЕС	DIMENSIONI - DIMENSIONS ABMESSUNGEN - DIMENSIONS - РАЗМЕРЫ				MODELLO MODEL MODELL MODELE МОДЕЛЬ МАШИНЫ
			A (mm)	B (mm)	C (mm)	D (mm)	
<b>594941</b>	2	2,0	160	115	20	38	
<b>594942</b>	1	2,1	160	115	20		
<b>4989877</b>	1	2,6	185	145	20		
<b>4989878</b>	2	2,7	185	145	20	38	
<b>4991076</b>	1	2,1	160	132	20		
<b>4991077</b>	2	2,0	160	132	20	38	
<b>70667236</b>	3	7,6	378	170	20		
<b>79005158</b>	4	4,1	250	170	20		
<b>79005159</b>	5	4,0	250	170	20	38	

Tutti i numeri, simboli, e denominazioni originali sono usati soltanto per riferimento, e non si deve in alcun modo intendere che i pezzi elencati siano originali.  
All manufacturers' name, numbers, symbols and descriptions are used for reference purpose only, and it is not implied that any part listed is the product of these manufacturers.

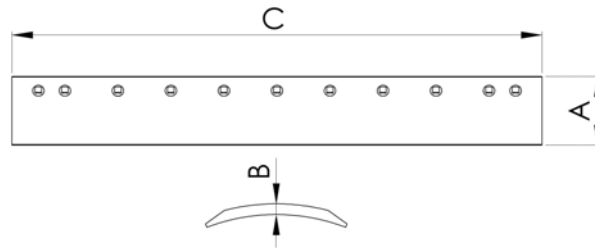
- Taglienti per scraper
- Cutting edges for scrapers
- Scraper-Messer
- Lame pour scraper
- Режущие кромки для скреперов



N. ORIGINALE ORIGINAL P/N ORIGINAL-NR. N. ORIGINAL ОРИГИНАЛЬНЫЙ НОМЕР	PESO (KG) WEIGHT GEWICHT POIDS ВЕС	DIMENSIONI - DIMENSIONS ABMESSUNGEN - DIMENSIONS - РАЗМЕРЫ				N. FORI HOLES BOHR. TROUS КОЛ-ВО ОТВЕРСТИЙ	MODELLO MODEL MODELL MODELE МОДЕЛЬ МАШИНЫ
		A (mm)	B (mm)	C (mm)	Ø Bolt (")		
<b>70198598</b>							
<b>70687035</b>	102,1	330	25	1671	3/4	22	
<b>70687036</b>	30,1	330	25	492	3/4	6	
<b>73105309</b>							

Tutti i numeri, simboli, e denominazioni originali sono usati soltanto per riferimento, e non si deve in alcun modo intendere che i pezzi elencati siano originali.  
All manufacturers' name, numbers, symbols and descriptions are used for reference purpose only, and it is not implied that any part listed is the product of these manufacturers.

- Taglienti per grader al carbonio
- High Carbon Cutting edges for graders
- Grader-Messer in Carbon-Stahl
- Lames pour niveleuse au carbon
- Режущие кромки для грейдеров

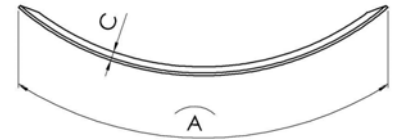
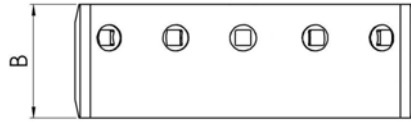
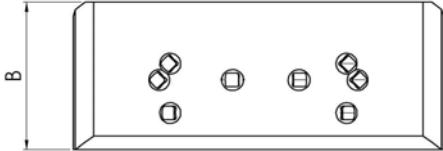


N. ORIGINALE ORIGINAL P/N ORIGINAL-NR. N. ORIGINAL ОРИГИНАЛЬНЫЙ НОМЕР	PESO (KG) WEIGHT GEWICHT POIDS ВЕС	DIMENSIONI - DIMENSIONS ABMESSUNGEN - DIMENSIONS - РАЗМЕРЫ				N. FORI HOLES BOHR. TROUS КОЛ-ВО ОТВЕРСТИЙ	MODELLO MODEL MODELL MODELE МОДЕЛЬ МАШИНЫ
		A (mm)	B (mm)	C (mm)	Ø Bolt (")		
<b>70694189</b>	35,5	152	16	2194	5/8	13	
<b>70694190</b>	41,5	152	16	2560	5/8	15	
<b>70694193</b>	59,9	203	16	2560	5/8	15	
<b>70694195</b>	44,3	152	20	2194	5/8	13	
<b>70694199</b>	71,9	203	20	2560	5/8	15	
<b>73128969</b>	35,5	152	16	2194	5/8	8	
<b>75239489</b>	29	152	16	1829	5/8	8	
<b>75239491</b>	35,5	152	16	2133	5/8	9	

Tutti i numeri, simboli, e denominazioni originali sono usati soltanto per riferimento, e non si deve in alcun modo intendere che i pezzi elencati siano originali.  
All manufacturers' name, numbers, symbols and descriptions are used for reference purpose only, and it is not implied that any part listed is the product of these manufacturers.

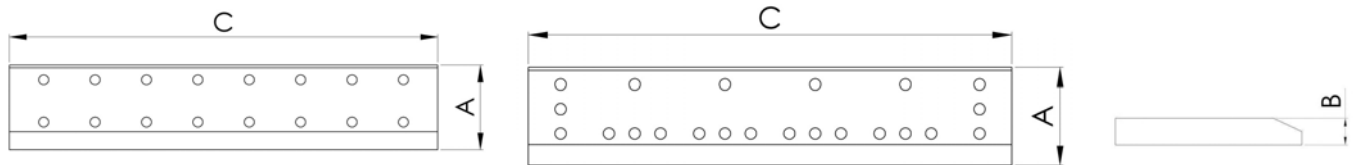


- Angolari per grader
- End bits for graders
- Grader-Ecken
- Coins pour niveleuse
- Угловые ножи для грейдеров



N. ORIGINALE ORIGINAL P/N ORIGINAL-NR. N. ORIGINAL ОРИГИНАЛЬНЫЙ НОМЕР	PESO (KG) WEIGHT GEWICHT POIDS ВЕС	DIMENSIONI - DIMENSIONS ABMESSUNGEN - DIMENSIONS - РАЗМЕРЫ				N. FORI HOLES BOHR. TROUS КОЛ-ВО ОТВЕРСТИЙ	MODELLO MODEL MODELL MODELE МОДЕЛЬ МАШИНЫ
		A (mm)	B (mm)	C (mm)	Ø Bolt (")		
<b>75241478</b>	14	497	203	19	5/8	6	

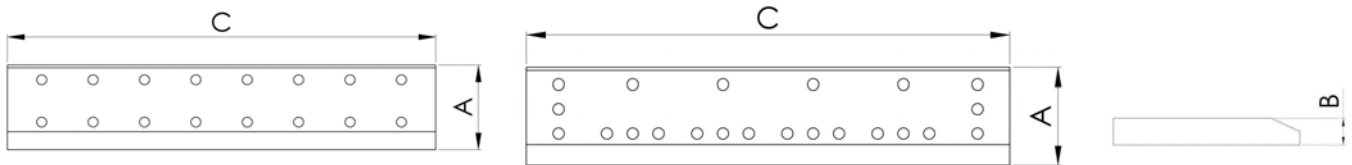
- Lame per pala caricatrice
- Cutting edges for loaders
- Messer für Ladeschaufeln
- Lames pour pelles chargeuses
- Режущие кромки для погрузчиков



N. ORIGINALE ORIGINAL P/N ORIGINAL-NR. N. ORIGINAL ОРИГИНАЛЬНЫЙ НОМЕР	PESO (KG) WEIGHT GEWICHT POIDS ВЕС	DIMENSIONI - DIMENSIONS ABMESSUNGEN - DIMENSIONS - РАЗМЕРЫ				MODELLO MODEL MODELL MODELE МОДЕЛЬ МАШИНЫ
		A (mm)	B (mm)	C (mm)	Ø Bolt (")	
<b>7022306</b>	71,04	200	20	2400	30	
<b>73064546</b>						
<b>73065704</b>						
<b>73066524</b>						
<b>76002531</b>						
<b>76007487</b>						
<b>76007488</b>						
<b>76008567</b>	237,12	300	40	2650		
<b>76012730</b>						
<b>76012837</b>						
<b>76015188</b>						
<b>76015402</b>						
<b>76016354</b>						
<b>76016357</b>						
<b>76016360</b>						
<b>76019459</b>	289	150	16	1614	13	
<b>76026012</b>	119,2	250	25	2660	22	
<b>76026014</b>						
<b>76026035</b>	268,5	300	40	3000	30	
<b>76026037</b>	281,8	300	40	3150	30	
<b>76026588</b>	106,2	250	25	2370	22	
<b>76026593</b>	65,7	200	20	2220	19	
<b>76026595</b>						
<b>76026608</b>	154	270	32	2438	25	
<b>76026651</b>	100,3	250	25	2240	22	
<b>76031731</b>	109,3	250	25	2440	22	

Tutti i numeri, simboli, e denominazioni originali sono usati soltanto per riferimento, e non si deve in alcun modo intendere che i pezzi elencati siano originali.  
All manufacturers' name, numbers, symbols and descriptions are used for reference purpose only, and it is not implied that any part listed is the product of these manufacturers.

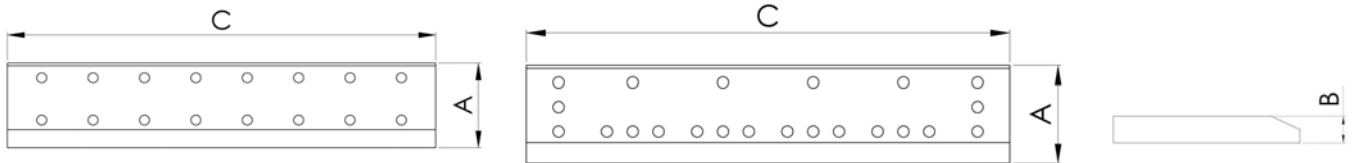
- Lame per pala caricatrice
- Cutting edges for loaders
- Messer für Ladeschaufeln
- Lames pour pelles chargeuses
- Режущие кромки для погрузчиков



N. ORIGINALE ORIGINAL P/N ORIGINAL-NR. N. ORIGINAL ОРИГИНАЛЬНЫЙ НОМЕР	PESO (KG) WEIGHT GEWICHT POIDS ВЕС	DIMENSIONI - DIMENSIONS ABMESSUNGEN - DIMENSIONS - РАЗМЕРЫ				MODELLO MODEL MODELL MODELE МОДЕЛЬ МАШИНЫ
		A (mm)	B (mm)	C (mm)	Ø Bolt (")	
<b>76031732</b>	119,2	250	25	2660	22	
<b>76031744</b>	176,8	270	32	2800	28	
<b>76031851</b>	281	300	40	3150	30	
<b>76031865</b>	268	300	40	3000	30	
<b>76031873</b>	106	250	25	2370	22	
<b>76031901</b>	69,5	200	20	2350	19	
<b>76031919</b>	67	200	20	2270	19	
<b>76033550</b>	109	250	25	2440	22	
<b>76033551</b>	119	250	25	2660	22	
<b>76033575</b>	119	250	25	2660		
<b>76033576</b>	109	250	25	2440		
<b>76033830</b>	176,7	270	32	2800	26	
<b>76034041</b>	282	300	40	3150		
<b>76034445</b>	268,4	300	40	3000	30	
<b>76034446</b>	281	300	40	3150	30	
<b>76034460</b>	269	300	40	3000		
<b>76036311</b>	110,7	250	25	2476		
<b>76044839</b>	155,9	270	32	2474		
<b>76045055</b>	182	270	32	2900	26	
<b>76049312</b>	169,7	270	32	2690		
<b>79030414</b>						
<b>79037819</b>						
<b>79042484</b>						
<b>79043384</b>						
<b>79044741</b>						
<b>79044742</b>						

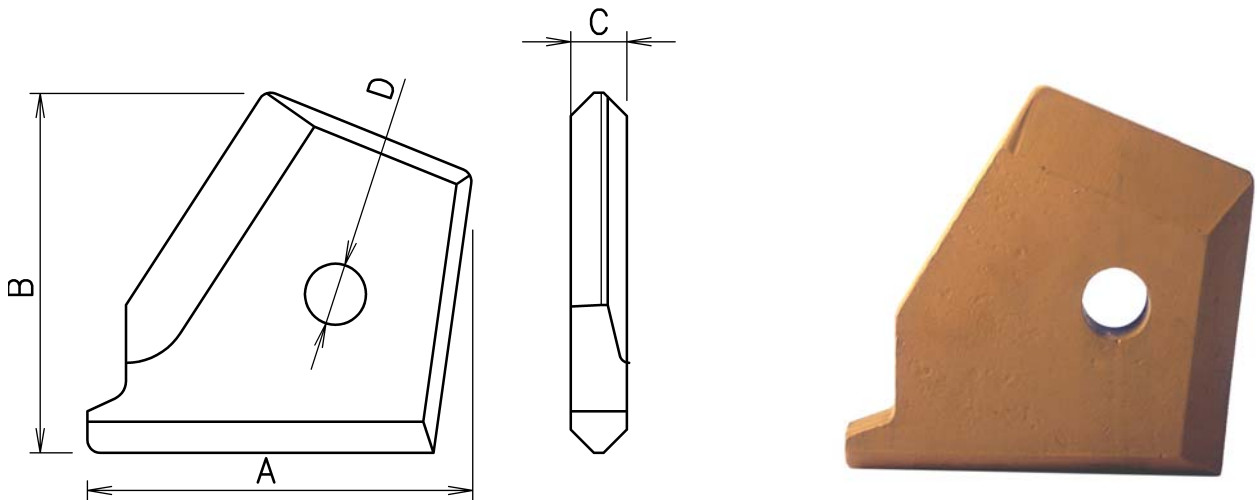
Tutti i numeri, simboli, e denominazioni originali sono usati soltanto per riferimento, e non si deve in alcun modo intendere che i pezzi elencati siano originali.  
All manufacturers' name, numbers, symbols and descriptions are used for reference purpose only, and it is not implied that any part listed is the product of these manufacturers.

- Lame per pala caricatrice
- Cutting edges for loaders
- Messer für Ladeschaufeln
- Lames pour pelles chargeuses
- Режущие кромки для погрузчиков



N. ORIGINALE ORIGINAL P/N ORIGINAL-NR. N. ORIGINAL ОРИГИНАЛЬНЫЙ НОМЕР	PESO (KG) WEIGHT GEWICHT POIDS ВЕС	DIMENSIONI - DIMENSIONS ABMESSUNGEN - DIMENSIONS - РАЗМЕРЫ				MODELLO MODEL MODELL MODELE МОДЕЛЬ МАШИНЫ
		A (mm)	B (mm)	C (mm)	Ø Bolt (")	
<b>79053039</b>						
<b>79054921</b>						
<b>79053082</b>						
<b>79057314</b>						
<b>79064361</b>	104,6	250	25	2335		
<b>79066890</b>						
<b>79066922</b>						
<b>79067645</b>						
<b>79067992</b>						
<b>79069098</b>						
<b>79044746</b>						
<b>79084561</b>						
<b>79087035</b>	67,2	200	20	2270	19	
<b>79094194</b>						
<b>79096019</b>						
<b>79109160</b>						
<b>79112117</b>						
<b>79112758</b>						
<b>8280669</b>						
<b>8281650</b>						
<b>8281967</b>						
<b>8288540</b>						
<b>8288584</b>						
<b>8291170</b>						

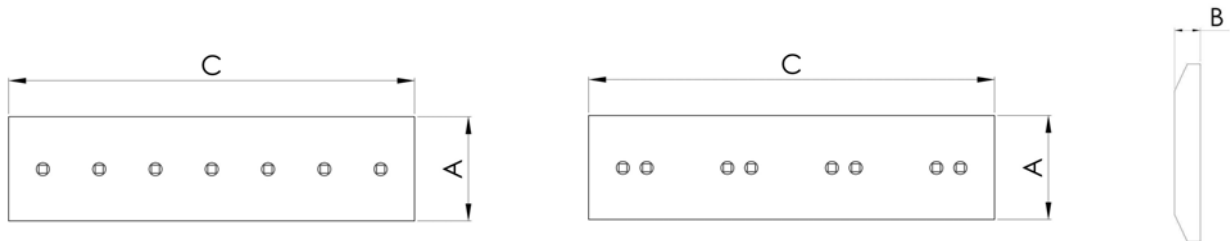
- Angolari per pala caricatrice
- Corners for loaders
- Schaufel-Seinteil
- Bandeaux pour pelles chargeuses
- Боковые кромки для погрузчиков



N. ORIGINALE ORIGINAL P/N ORIGINAL-NR. N. ORIGINAL ОРИГИНАЛЬНЫЙ НОМЕР	PESO (KG) WEIGHT GEWICHT POIDS ВЕС	DIMENSIONI - DIMENSIONS ABMESSUNGEN - DIMENSIONS - РАЗМЕРЫ				MODELLO MODEL MODELL MODELE МОДЕЛЬ МАШИНЫ
		A (mm)	B (mm)	C (mm)	D (mm)	
<b>76011532/33</b>						
<b>76034456/57</b>	12	291	250	30	36	
<b>76034458/59</b>	12	291	250	30		
<b>79042489</b>	7	230	223	25		
<b>79054919</b>		238	235	20	30	
<b>79066891</b>		242	246	25	30	
<b>79084559</b>		242	237	20	30	

Tutti i numeri, simboli, e denominazioni originali sono usati soltanto per riferimento, e non si deve in alcun modo intendere che i pezzi elencati siano originali.  
All manufacturers' name, numbers, symbols and descriptions are used for reference purpose only, and it is not implied that any part listed is the product of these manufacturers.

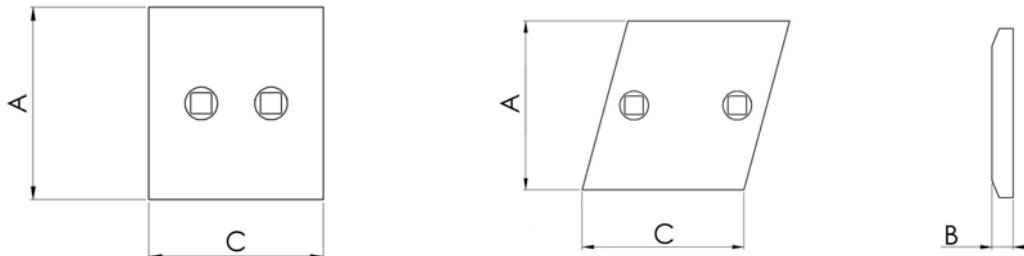
- Taglienti imbullonati per pale caricatrici
- Bolt-on cutting edges for loaders
- Anschraub-Messer für Ladeschaufeln
- Lames boulonnées pour pelles chargeuses
- Грейдерные кромки



N. ORIGINALE ORIGINAL P/N ORIGINAL-NR. N. ORIGINAL ОРИГИНАЛЬНЫЙ НОМЕР	PESO (KG) WEIGHT GEWICHT POIDS ВЕС	DIMENSIONI - DIMENSIONS ABMESSUNGEN - DIMENSIONS - РАЗМЕРЫ				N. FORI HOLES BOHR. TROUS КОЛ-ВО ОТВЕРСТИЙ	MODELLO MODEL MODELL MODELE МОДЕЛЬ МАШИНЫ
		A (mm)	B (mm)	C (mm)	Ø Bolt (")		
<b>73064504</b>							
<b>76012763</b>							
<b>76016355</b>	90,8	330	25	1486	3/4	9	
<b>76016358</b>	42	200	20	1486	3/4	9	
<b>76016361</b>	40,4	200	20	1430	3/4	9	
<b>76033543</b>	101,8	330	25	1666	3/4	6	
<b>76033546</b>	110,4	330	25	1806	3/4	6	
<b>76033824</b>	122	330	25	1996	7/8	6	
<b>76034782</b>	79,2	330	25	1296	3/4	6	
<b>76034784</b>	87,8	330	25	1436	3/4	6	
<b>76034786</b>	79,8	330	25	1306	7/8	5	
<b>76034788</b>	104	406	25	1405	7/8	5	
<b>76034790</b>	113,3	406	25	1519	7/8	5	
<b>76034930</b>	96	406	25	1288	7/8	7	
<b>76034934</b>	101,8	406	25	1366	7/8	7	
<b>76035010</b>	73,4	330	25	1201	7/8	7	
<b>76035043</b>	73,3	330	25	1200	3/4	7	
<b>76035047</b>	79,7	330	25	1305	3/4	7	
<b>76047507</b>	80,5	330	25	1316	7/8	6	
<b>76047624</b>	83,3	330	25	1362	7/8	5	
<b>76049330</b>	76,3	330	25	1258	7/8	5	
<b>79097011</b>	127,1	330	25	2080	3/4	11	
<b>79097025</b>	136,6	330	25	2235	7/8	13	
<b>79106603</b>	115,5	330	25	1890	3/4	11	
<b>79111855</b>	188,9	406	25	2533	7/8	13	
<b>79112981</b>	177,4	406	25	2379	7/8	13	
<b>85801161</b>	63,6	200	20	2250	5/8	8	

Tutti i numeri, simboli, e denominazioni originali sono usati soltanto per riferimento, e non si deve in alcun modo intendere che i pezzi elencati siano originali.  
All manufacturers' name, numbers, symbols and descriptions are used for reference purpose only, and it is not implied that any part listed is the product of these manufacturers.

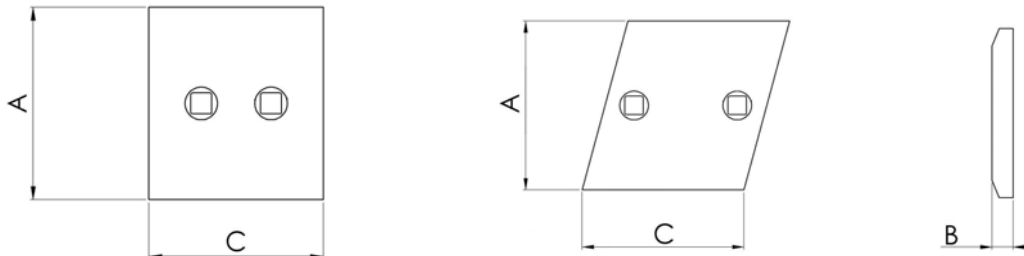
- Terminali imbullonati per pale caricatrici
- Bolt-on end bits for loaders
- Anschraub-Endstück für Ladeschaufeln
- Coins boulonnés pour pelles chargeuses
- боковые защитные пластины для погрузчиков



N. ORIGINALE ORIGINAL P/N ORIGINAL-NR. N. ORIGINAL ОРИГИНАЛЬНЫЙ НОМЕР	PESO (KG) WEIGHT GEWICHT POIDS ВЕС	DIMENSIONI - DIMENSIONS ABMESSUNGEN - DIMENSIONS - РАЗМЕРЫ				N. FORI HOLES BOHR. TROUS КОЛ-ВО ОТВЕРСТИЙ	MODELLO MODEL MODELL MODELE МОДЕЛЬ МАШИНЫ
		A (mm)	B (mm)	C (mm)	Ø Bolt (")		
<b>76016356</b>	26,4	432	330	25	3/4	2	
<b>76016359</b>	11,9	422	200	20	3/4	2	
<b>76016362</b>	11,6	410	200	20	3/4	2	
<b>76026011</b>	17,4	285	330	25	3/4	2	
<b>76026013</b>	17,4	282	330	25	7/8	2	
<b>76026036</b>	22,7	304	406	25	7/8	2	
<b>76033544</b>	23,8	390	330	25	3/4	2	
<b>76033547</b>	26,3	430	330	25	3/4	2	
<b>76033554</b>	12,3	260	254	25	3/4	2	
<b>76033557</b>	13,6	290	254	25	3/4	2	
<b>76033825</b>	24,6	405	330	25	7/8	2	
<b>76033828</b>	11,4	245	254	25	7/8	2	
<b>76034409</b>	10,7	126	330	35	7/8	3	
<b>76034437</b>	20,9	245	330	35	7/8	2	
<b>76034440</b>	22,6	265	330	35	7/8	2	
<b>76034783</b>	35,1	575	330	25	3/4	2	
<b>76034785</b>	37,9	615	330	25	3/4	2	
<b>76034787</b>	45,9	750	330	25	7/8	3	

Tutti i numeri, simboli, e denominazioni originali sono usati soltanto per riferimento, e non si deve in alcun modo intendere che i pezzi elencati siano originali.  
All manufacturers' name, numbers, symbols and descriptions are used for reference purpose only, and it is not implied that any part listed is the product of these manufacturers.

- Terminali imbullonati per pale caricatrici
- Bolt-on end bits for loaders
- Anschraub-Endstück für Ladeschaufeln
- Coins boulonnés pour pelles chargeuses
- боковые защитные пластины для погрузчиков



N. ORIGINALE ORIGINAL P/N ORIGINAL-NR. N. ORIGINAL ОРИГИНАЛЬНЫЙ НОМЕР	PESO (KG) WEIGHT GEWICHT POIDS ВЕС	DIMENSIONI - DIMENSIONS ABMESSUNGEN - DIMENSIONS - РАЗМЕРЫ				N. FORI HOLES BOHR. TROUS КОЛ-ВО ОТВЕРСТИЙ	MODELLO MODEL MODELL MODELE МОДЕЛЬ МАШИНЫ
		A (mm)	B (mm)	C (mm)	Ø Bolt (")		
<b>76034789</b>	59,7	801	406	25	7/8	3	
<b>76034791</b>	61,0	819	406	25	7/8	3	
<b>76034931</b>	64,0	859	406	25	7/8	5	
<b>76034935</b>	66,8	896	406	25	7/8	5	
<b>76035011</b>	49,0	803	330	25	7/8	5	
<b>76035044</b>	38,0	622	330	25	3/4	4	
<b>76035048</b>	41,5	680	330	25	3/4	4	
<b>76047508</b>	35,11	582	330	25	7/8	2	
<b>76047509</b>	11,2	248	254	25	7/8	2	
<b>76047625</b>	47	772	330	25	7/8	3	
<b>76047626</b>	12,2	258	254	25	7/8	2	
<b>76049328</b>	10,3	232	254	25	7/8	3	
<b>76049329</b>	43,7	720	330	25	7/8	3	
<b>79097010</b>	17,4	285	330	25	3/4	2	
<b>79097026</b>	17,2	282	330	25	7/8	2	
<b>79106604</b>	16,3	270	330	25	3/4	2	
<b>79111856</b>	22,7	304	406	25	7/8	2	

Tutti i numeri, simboli, e denominazioni originali sono usati soltanto per riferimento, e non si deve in alcun modo intendere che i pezzi elencati siano originali.  
All manufacturers' name, numbers, symbols and descriptions are used for reference purpose only, and it is not implied that any part listed is the product of these manufacturers.